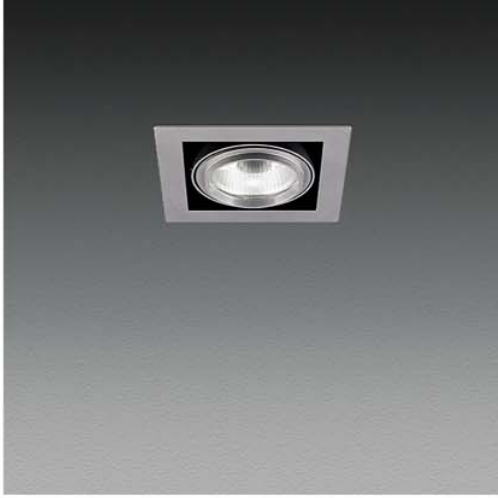




– Ankastra Spotlar Recessed Spotlights –

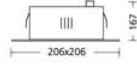


Malzeme : Alüminyum enjeksiyon ve DKP sac gövde, alüminyum reflektör  
ve ısıya dayanıklı cam  
Renk : Metalik Gri, Beyaz, Siyah  
Elektronik veya mekanik balast kiti dahil  
Material : Die-cast aluminium and pressed steel body, aluminium reflector  
and tempered glass  
Color : Metallic Grey, White, Black  
With electronic or conventional ballast kit

107113



MAX.1x35-70W. HIT-CE G12



IP 20

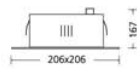


Malzeme : Alüminyum enjeksiyon ve DKP sac gövde  
Renk : Metalik Gri, Beyaz, Siyah  
Elektronik veya mekanik balast kiti dahil  
Material : Die-cast aluminium and pressed steel body  
Color : Metallic Grey, White, Black  
With electronic or conventional ballast kit

107117



MAX.1x35-70W. HIRCE 111 GX8.5



IP 20





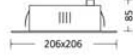
Malzeme : Alüminyum enjeksiyon ve DKP sac gövde  
Renk : Metalik Gri, Beyaz, Siyah  
Elektronik trafo kiti dahil

Material : Die-cast aluminium and pressed steel body  
Color : Metallic Grey, White, Black  
With electronic transformer kit

102132



MAX.1x12V. 75W. QR4P111 G53



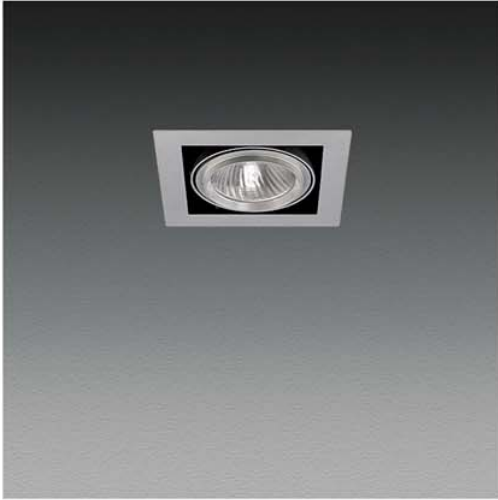
IP 20



170x170



1.4 m



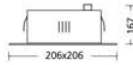
Malzeme : Alüminyum enjeksiyon ve DKP sac gövde  
Renk : Metalik Gri, Beyaz, Siyah

Material : Die-cast aluminium and pressed steel body  
Color : Metallic Grey, White, Black

100109



MAX.1x75W. QPAR30 E27



IP 20



170x170



1.0 m



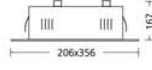


Malzeme : Alüminyum enjeksiyon ve DKP sac gövde, alüminyum reflektör  
ve ısıya dayanıklı cam  
Renk : Metalik Gri, Beyaz, Siyah  
Elektronik veya mekanik balast kiti dahil  
Material : Die-cast aluminium and pressed steel body, aluminium reflector  
and tempered glass  
Color : Metallic Grey, White, Black  
With electronic or conventional ballast kit

107203



MAX.2x35-70W. HIT-CE G12



IP 20



Malzeme : Alüminyum enjeksiyon ve DKP sac gövde  
Renk : Metalik Gri, Beyaz, Siyah  
Elektronik veya mekanik balast kiti dahil  
Material : Die-cast aluminium and pressed steel body  
Color : Metallic Grey, White, Black  
With electronic or conventional ballast kit

107205



MAX.2x35-70W. HIR-CE 111 GX8.5



IP 20





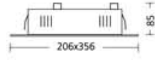
Malzeme : Alüminyum enjeksiyon ve DKP sac gövde  
Renk : Metalik Gri, Beyaz, Siyah  
Elektronik trafo kiti dahil

Material : Die-cast aluminium and pressed steel body  
Color : Metallic Grey, White, Black  
With electronic transformer kit

102205



MAX.2x12V. 75W. QR1P111 G53



IP 20



170x320



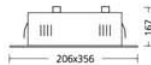
Malzeme : Alüminyum enjeksiyon ve DKP sac gövde  
Renk : Metalik Gri, Beyaz, Siyah

Material : Die-cast aluminium and pressed steel body  
Color : Metallic Grey, White, Black

100201



MAX.2x75W. QPAR30 E27



IP 20



170x320











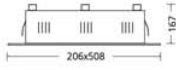
Malzeme : Alüminyum enjeksiyon ve DKP sac gövde, alüminyum reflektör  
ve ısıya dayanıklı cam  
Renk : Metalik Gri, Beyaz, Siyah  
Elektronik veya mekanik balast kiti dahil

Material : Die-cast aluminium and pressed steel body, aluminium reflector  
and tempered glass  
Color : Metallic Grey, White, Black  
With electronic or conventional ballast kit

107303



MAX.3x35-70W. HIT-CE G12



IP 20



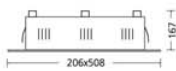
Malzeme : Alüminyum enjeksiyon ve DKP sac gövde  
Renk : Metalik Gri, Beyaz, Siyah  
Elektronik veya mekanik balast kiti dahil

Material : Die-cast aluminium and pressed steel body  
Color : Metallic Grey, White, Black  
With electronic or conventional ballast kit

107305



MAX.3x35-70W. HR-CE 111 GX8.5



IP 20





Malzeme : Alüminyum enjeksiyon ve DKP sac gövde  
Renk : Metalik Gri, Beyaz, Siyah  
Elektronik trafo kiti dahil

Material : Die-cast aluminium and pressed steel body  
Color : Metallic Grey, White, Black  
With electronic transformer kit

102303



MAX.3x12V. 75W. QR4P111 G53



IP 20



170x470



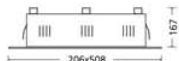
Malzeme : Alüminyum enjeksiyon ve DKP sac gövde  
Renk : Metalik Gri, Beyaz, Siyah

Material : Die-cast aluminium and pressed steel body  
Color : Metallic Grey, White, Black

100301



MAX.3x75W. QPAR30 E27



IP 20

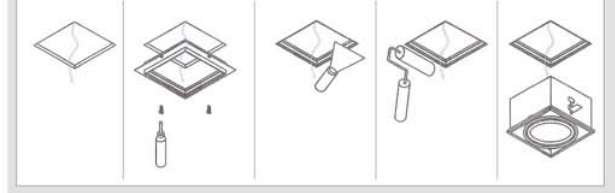


170x470





Kasnak Montaj Şeması / Assembling Instructions of Frame



Malzeme : Alüminyum enjeksiyon ve DKP sac gövde, alüminyum reflektör  
ve ısıya dayanıklı cam

Renk : Siyah, Beyaz  
Elektronik veya mekanik balast kiti dahil

Material : Die-cast aluminium and pressed steel body, aluminium reflector  
and tempered glass

Color : Black, White  
With electronic or conventional ballast kit

107114



MAX.1x35-70W. HIT-CE G12

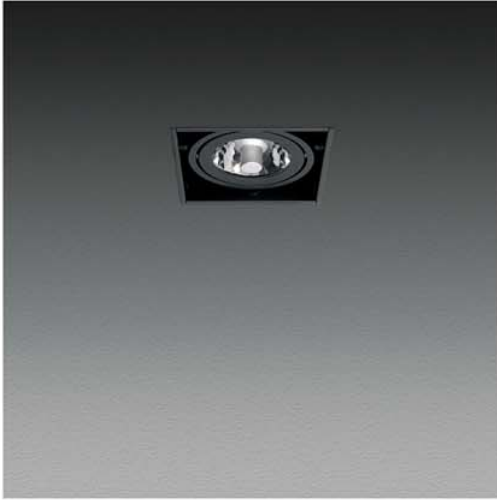


9KSN01

Kasnak / Frame



IP 20



Malzeme : Alüminyum enjeksiyon ve DKP sac gövde

Renk : Siyah, Beyaz  
Elektronik veya mekanik balast kiti dahil

Material : Die-cast aluminium and pressed steel body

Color : Black, White  
With electronic or conventional ballast kit

107118



MAX.1x35-70W. HIRCE 111 GX8.5



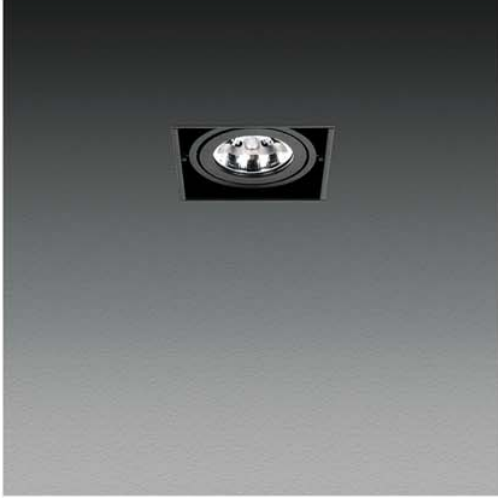
9KSN01

Kasnak / Frame



IP 20





Malzeme : Alüminyum enjeksiyon ve DKP sac gövde  
Renk : Siyah, Beyaz  
Elektronik trafo kiti dahil

Material : Die-cast aluminium and pressed steel body  
Color : Black, White  
With electronic transformer kit

102133



MAX.1x12V, 75W, QR-LP111 G53

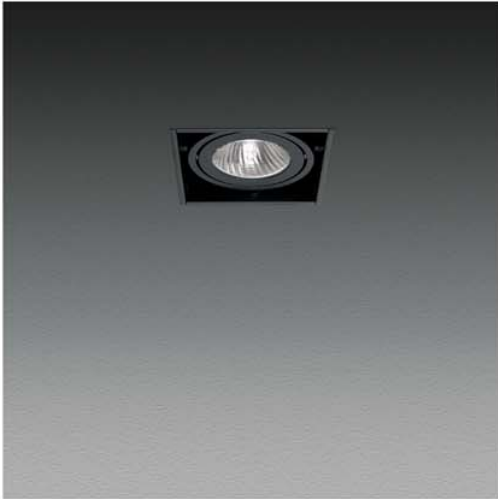


9KSN01

Kazak / Frame



IP 20



Malzeme : Alüminyum enjeksiyon ve DKP sac gövde  
Renk : Siyah, Beyaz

Material : Die-cast aluminium and pressed steel body  
Color : Black, White

100111



MAX.1x75W, QPAR30 E27



9KSN01

Kazak / Frame

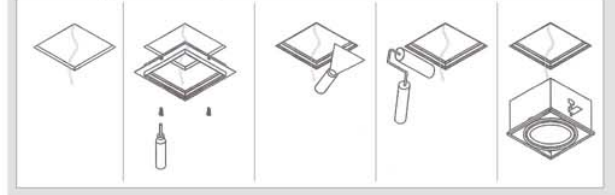


IP 20





Kasnak Montaj Şeması / Assembling Instructions of Frame



Malzeme : Alüminyum enjeksiyon ve DKP sac gövde, alüminyum reflektör  
ve ısıya dayanıklı cam  
Renk : Siyah, Beyaz  
Elektronik veya mekanik balast kiti dahil  
Material : Die-cast aluminium and pressed steel body, aluminium reflector  
and tempered glass  
Color : Black, White  
With electronic or conventional ballast kit

107204



MAX.2x35-70W. HIT-CE G12



9KSN02

Kasnak / Frame



IP 20



174x316

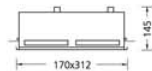


Malzeme : Alüminyum enjeksiyon ve DKP sac gövde  
Renk : Siyah, Beyaz  
Elektronik veya mekanik balast kiti dahil  
Material : Die-cast aluminium and pressed steel body  
Color : Black, White  
With electronic or conventional ballast kit

107206



MAX.2x35-70W. HIR-CE 111 GX8.5



9KSN02

Kasnak / Frame



IP 20



174x316





Malzeme : Alüminyum enjeksiyon ve DKP sac gövde  
Renk : Siyah, Beyaz  
Elektronik trafo kiti dahil

Material : Die-cast aluminium and pressed steel body  
Color : Black, White  
With electronic transformer kit

102206



MAX.2x12V, 75W, QR:LP111 G53

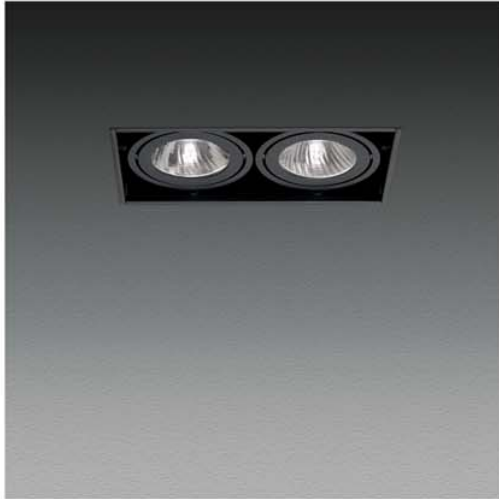


9KSN02

Kazak / Frame



IP 20



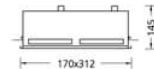
Malzeme : Alüminyum enjeksiyon ve DKP sac gövde  
Renk : Siyah, Beyaz

Material : Die-cast aluminium and pressed steel body  
Color : Black, White

100202



MAX.2x75W, QPAR30 E27



9KSN02

Kazak / Frame

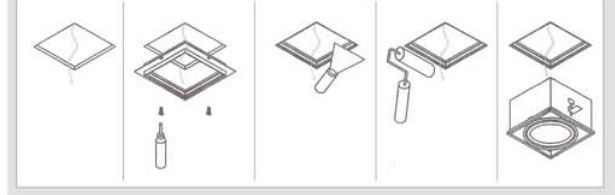


IP 20





Kasnak Montaj Şeması / Assembling Instructions of Frame



Malzeme : Alüminyum enjeksiyon ve DKP sac gövde, alüminyum reflektör  
ve ısıya dayanıklı cam  
Renk : Siyah, Beyaz  
Elektronik veya mekanik balast kiti dahil  
Material : Die-cast aluminium and pressed steel body, aluminium reflector  
and tempered glass  
Color : Black, White  
With electronic or conventional ballast kit

107304



MAX.3x35-70W. HIT-CE G12



9KSN03

Kasnak / Frame



IP 20



174x458



Malzeme : Alüminyum enjeksiyon ve DKP sac gövde  
Renk : Siyah, Beyaz  
Elektronik veya mekanik balast kiti dahil  
Material : Die-cast aluminium and pressed steel body  
Color : Black, White  
With electronic or conventional ballast kit

107306



MAX.3x35-70W. HIRCE 111 GX8.5



9KSN03

Kasnak / Frame



IP 20



174x458





Malzeme : Alüminyum enjeksiyon ve DKP sac gövde  
 Renk : Siyah, Beyaz  
 Elektronik trafo kiti dahil

Material : Die-cast aluminium and pressed steel body  
 Color : Black, White  
 With electronic transformer kit

102304



MAX.3x12V, 75W, QR/IP111 G53



9KSN03

Kaznak / Frame



IP 20



174x458



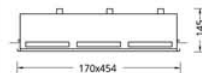
Malzeme : Alüminyum enjeksiyon ve DKP sac gövde  
 Renk : Siyah, Beyaz

Material : Die-cast aluminium and pressed steel body  
 Color : Black, White

100302



MAX.3x75W, QPAR30 E27



9KSN03

Kaznak / Frame



IP 20



174x458



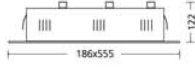




Malzeme : Alüminyum enjeksiyon, DKP sac gövde,  
alüminyum reflektör ve ısıya dayanıklı cam  
Renk : Metalik Gri, Beyaz, Siyah  
Elektronik veya mekanik trafo ve balast kiti dahil

Material : Die-cast aluminium, pressed steel body,  
aluminium reflector and tempered glass  
Color : Metallic Grey, White, Black  
With electronic or conventional transformer and ballast kit

103401



IP 20



Malzeme : Alüminyum enjeksiyon, DKP sac gövde,  
alüminyum reflektör ve ısıya dayanıklı cam  
Renk : Metalik Gri, Beyaz, Siyah  
Elektronik veya mekanik trafo ve balast kiti dahil

Material : Die-cast aluminium, pressed steel body,  
aluminium reflector and tempered glass  
Color : Metallic Grey, White, Black  
With electronic or conventional transformer and ballast kit

103301



IP 20

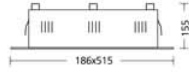




Malzeme : Alüminyum enjeksiyon, DKP sac gövde,  
alüminyum reflektör ve ısıya dayanıklı cam  
Renk : Metalik Gri, Beyaz, Siyah  
Elektronik veya mekanik trafo ve balast kiti dahil

Material : Die-cast aluminium, pressed steel body,  
aluminium reflector and tempered glass  
Color : Metallic Grey, White, Black  
With electronic or conventional transformer and ballast kit

103302



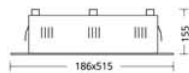
IP 20



Malzeme : Alüminyum enjeksiyon, DKP sac gövde,  
alüminyum reflektör ve ısıya dayanıklı cam  
Renk : Metalik Gri, Beyaz, Siyah  
Elektronik veya mekanik trafo ve balast kiti dahil

Material : Die-cast aluminium, pressed steel body,  
aluminium reflector and tempered glass  
Color : Metallic Grey, White, Black  
With electronic or conventional transformer and ballast kit

103303



IP 20





Malzeme : Alüminyum enjeksiyon, DKP sac gövde,  
alüminyum reflektör ve ısıya dayanıklı cam  
Renk : Metalik Gri, Beyaz, Siyah  
Elektronik veya mekanik balast kiti dahil

Material : Die-cast aluminium, pressed steel body,  
aluminium reflector and tempered glass  
Color : Metallic Grey, White, Black  
With electronic or conventional ballast kit

103304



IP 20





Architects: Skanska | Photographer: Skanska

## Ankastre Spotlar | Recessed Spotlights



Malzeme : Alüminyum enjeksiyon ve DKP sac gövde  
Renk : Metalik Gri, Beyaz, Siyah  
Elektronik trafo dahil

Material : Die-cast aluminium and pressed steel body  
Color : Metallic Grey, White, Black  
With electronic transformer

102130



MAX.1x12V, 50W, QR CBC51 GU5.3



IP 20



Malzeme : Alüminyum enjeksiyon ve DKP sac gövde  
Renk : Metalik Gri, Beyaz, Siyah

Material : Die-cast aluminium and pressed steel body  
Color : Metallic Grey, White, Black

100112



MAX.1x50W, QPAR16 GU10



IP 20



Malzeme : Alüminyum enjeksiyon ve DKP sac gövde  
Renk : Metalik Gri, Beyaz, Siyah  
Elektronik balast kiti dahil

Material : Die-cast aluminium and pressed steel body  
Color : Metallic Grey, White, Black  
With electronic ballast kit

107111



MAX.1x20-35W, HPAR51 GX10



IP 20





Malzeme : Alüminyum enjeksiyon ve DKP sac gövde  
Renk : Metalik Gri, Beyaz, Siyah  
Elektronik trafo dahil

Material : Die-cast aluminium and pressed steel body  
Color : Metallic Grey, White, Black  
With electronic transformer

102203



MAX.2x12V, 50W, QR/CBC51 GU5.3



IP 20



90x180



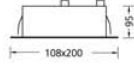
Malzeme : Alüminyum enjeksiyon ve DKP sac gövde  
Renk : Metalik Gri, Beyaz, Siyah

Material : Die-cast aluminium and pressed steel body  
Color : Metallic Grey, White, Black

100203



MAX.2x50W, QPAR16 GU10



IP 20



90x180



Malzeme : Alüminyum enjeksiyon ve DKP sac gövde  
Renk : Metalik Gri, Beyaz, Siyah  
Elektronik balast kiti dahil

Material : Die-cast aluminium and pressed steel body  
Color : Metallic Grey, White, Black  
With electronic ballast kit

107201



MAX2x20-35W, HI-PARS1 GX10



IP 20



90x180

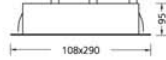




Malzeme : Alüminyum enjeksiyon ve DKP sac gövde  
 Renk : Metalik Gri, Beyaz, Siyah  
 Elektronik trafo dahil

Material : Die-cast aluminium and pressed steel body  
 Color : Metallic Grey, White, Black  
 With electronic transformer

102301



IP 20



Malzeme : Alüminyum enjeksiyon ve DKP sac gövde  
 Renk : Metalik Gri, Beyaz, Siyah

Material : Die-cast aluminium and pressed steel body  
 Color : Metallic Grey, White, Black

100303



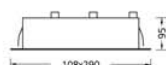
IP 20



Malzeme : Alüminyum enjeksiyon ve DKP sac gövde  
 Renk : Metalik Gri, Beyaz, Siyah  
 Elektronik balast kiti dahil

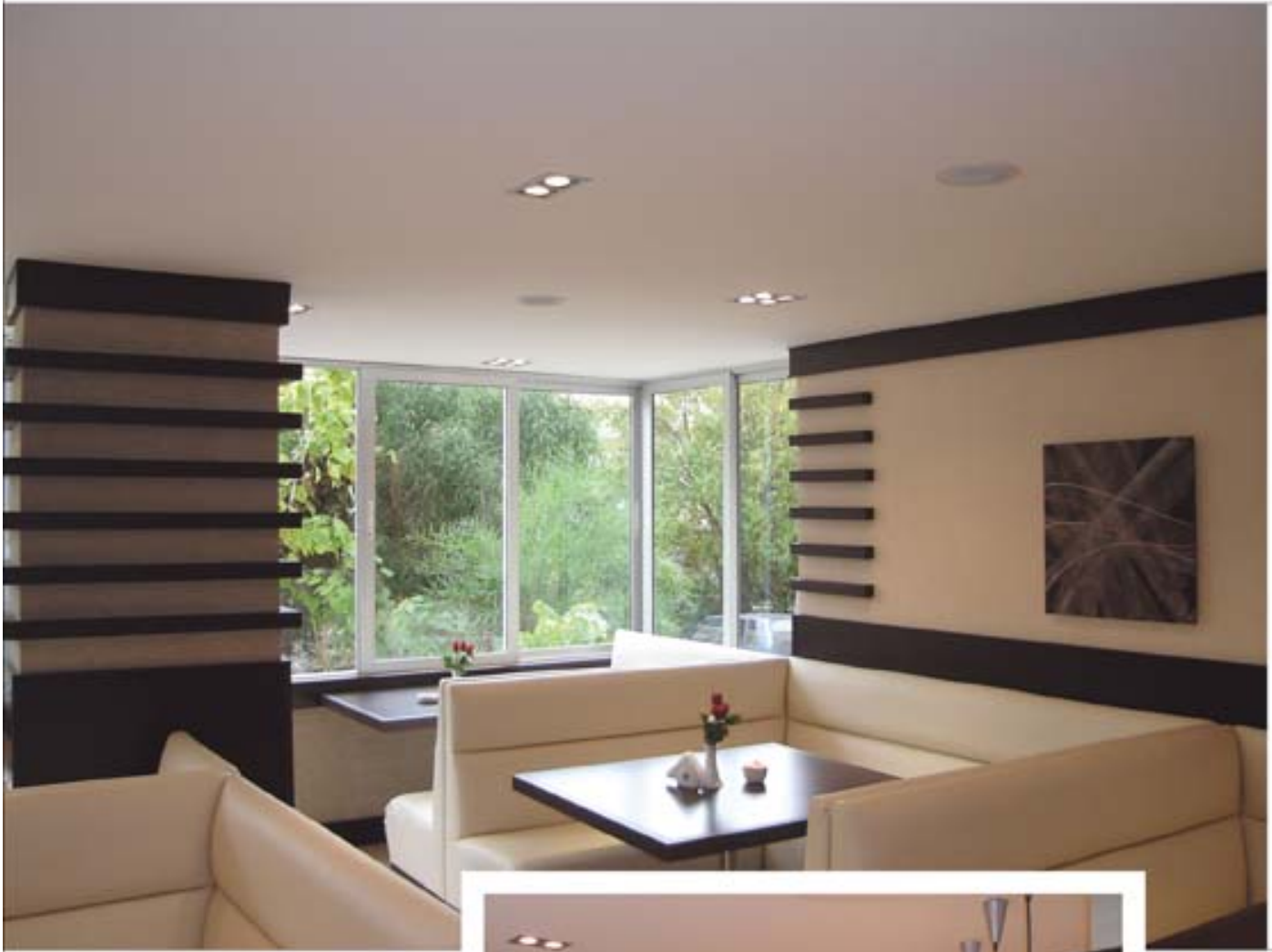
Material : Die-cast aluminium and pressed steel body  
 Color : Metallic Grey, White, Black  
 With electronic ballast kit

107301



IP 20





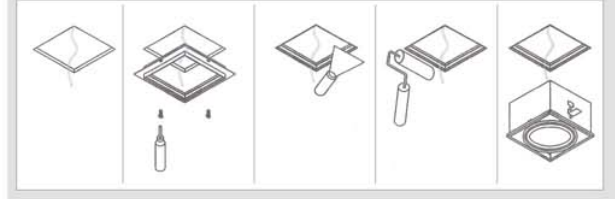
Arhitektura: Spasidze | Fotografija: Spasidze





# Ankastre Spotlar | Recessed Spotlights

Kasnak Montaj Şeması / Assembling Instructions of Frame



Malzeme : Alüminyum enjeksiyon ve DKP sac gövde  
Renk : Siyah, Beyaz  
Elektronik trafo dahil

Material : Die-cast aluminium and pressed steel body  
Color : Black, White  
With electronic transformer

102131



MAX.1x12V, 50W, QR/CBCS1 GU5.3

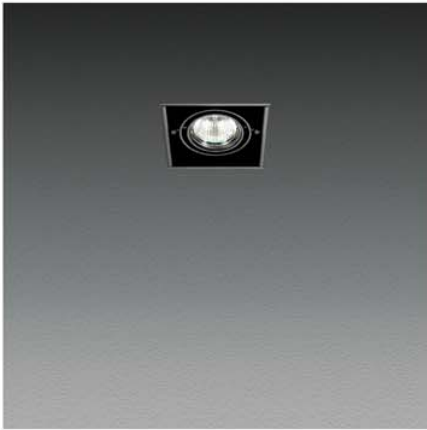


9KSN04

Kasnak / Frame



IP 20



Malzeme : Alüminyum enjeksiyon ve DKP sac gövde  
Renk : Siyah, Beyaz

Material : Die-cast aluminium and pressed steel body  
Color : Black, White

100113



MAX.1x50W, QPAR16 GU10

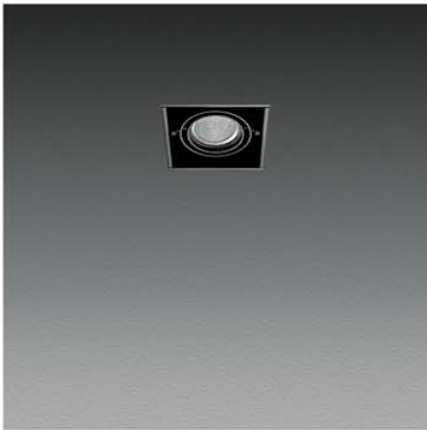


9KSN04

Kasnak / Frame



IP 20



Malzeme : Alüminyum enjeksiyon ve DKP sac gövde  
Renk : Siyah, Beyaz  
Elektronik balast kiti dahil

Material : Die-cast aluminium and pressed steel body  
Color : Black, White  
With electronic ballast kit

107112



MAX.1x20-35W, HF-PARS1 GX10



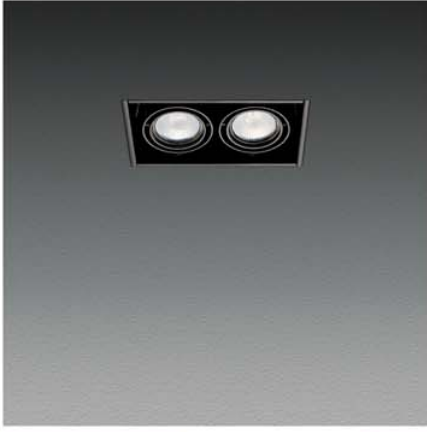
9KSN04

Kasnak / Frame



IP 20





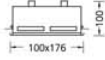
Malzeme : Alüminyum enjeksiyon ve DKP sac gövde  
Renk : Siyah, Beyaz  
Elektronik trafo dahil

Material : Die-cast aluminium and pressed steel body  
Color : Black, White  
With electronic transformer

102204



MAX.2x12V, 50W, QR.CBCS1 GU5.3

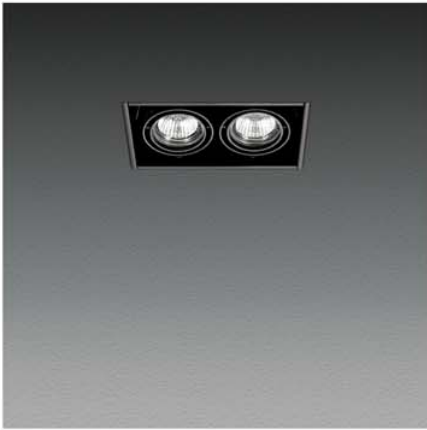


9KSN05

Kasnak / Frame



IP 20



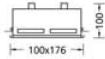
Malzeme : Alüminyum enjeksiyon ve DKP sac gövde  
Renk : Siyah, Beyaz

Material : Die-cast aluminium and pressed steel body  
Color : Black, White

100204



MAX.2x50W, QPAR16 GU10

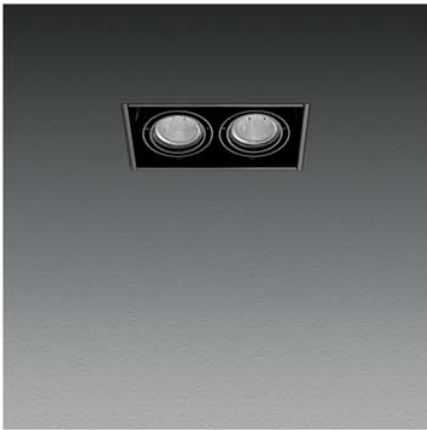


9KSN05

Kasnak / Frame



IP 20



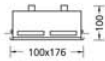
Malzeme : Alüminyum enjeksiyon ve DKP sac gövde  
Renk : Siyah, Beyaz  
Elektronik balast kiti dahil

Material : Die-cast aluminium and pressed steel body  
Color : Black, White  
With electronic ballast kit

107202



MAX.2x20-35W, HIFARS1 GX10



9KSN05

Kasnak / Frame

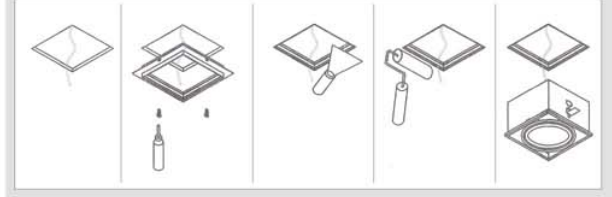


IP 20



# Ankastre Spotlar | Recessed Spotlights

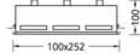
Kasnak Montaj Şeması / Assembling Instructions of Frame



Malzeme : Alüminyum enjeksiyon ve DKP sac gövde  
Renk : Siyah, Beyaz  
Elektronik trafo dahil

Material : Die-cast aluminium and pressed steel body  
Color : Black, White  
With electronic transformer

102302



9KSN06

Kasnak / Frame



IP 20



0.5 m



Malzeme : Alüminyum enjeksiyon ve DKP sac gövde  
Renk : Siyah, Beyaz

Material : Die-cast aluminium and pressed steel body  
Color : Black, White

100304



9KSN06

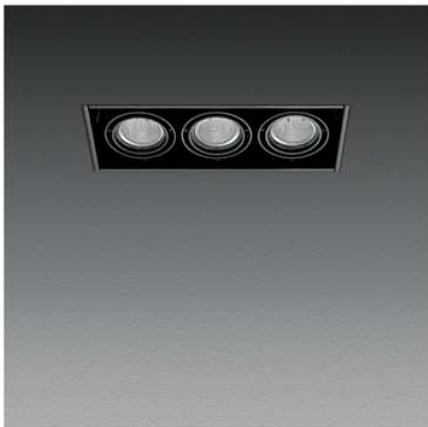
Kasnak / Frame



IP 20



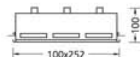
0.5 m



Malzeme : Alüminyum enjeksiyon ve DKP sac gövde  
Renk : Siyah, Beyaz  
Elektronik balast kiti dahil

Material : Die-cast aluminium and pressed steel body  
Color : Black, White  
With electronic ballast kit

107302



9KSN06

Kasnak / Frame

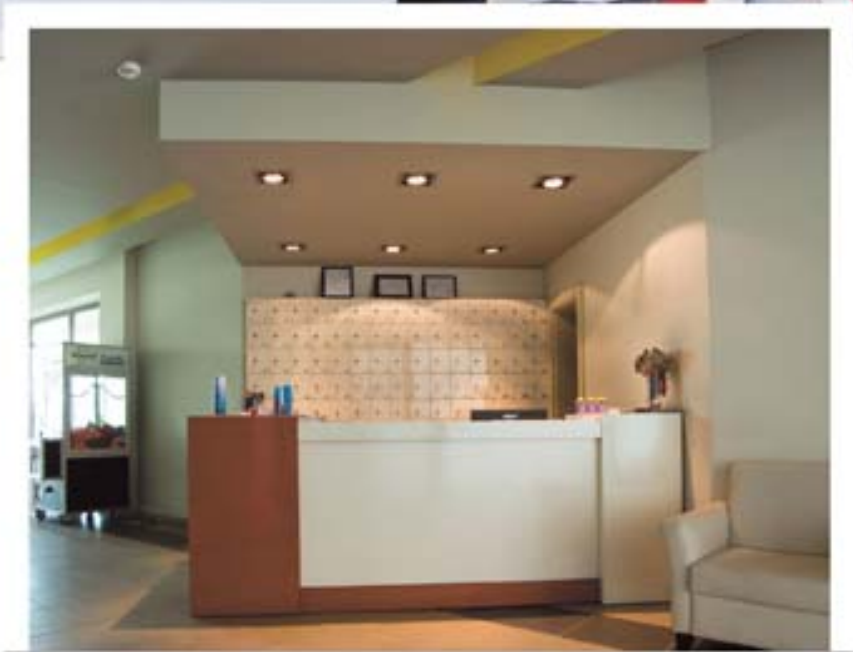


IP 20



1.4 m



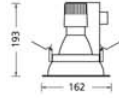




Malzeme : DKP sac ve alüminyum enjeksiyon gövde, alüminyum reflektör  
ve ısıya dayanıklı cam  
Renk : Beyaz, Siyah, Metalik Gri  
Elektronik veya mekanik balast kiti dahil

Material : Pressed steel and die-cast aluminium body, aluminium reflector  
and tempered glass  
Color : White, Black, Metallic Grey  
With electronic or conventional ballast kit

107101



IP 20

REFLEKTÖR TIPI  
REFLECTOR TYPE

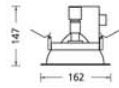
Dar / Narrow 10°  
Orta / Middle 24°  
Geniş / Wide 45°



Malzeme : DKP sac ve alüminyum enjeksiyon gövde  
Renk : Beyaz, Siyah, Metalik Gri  
Elektronik veya mekanik balast kiti dahil

Material : Pressed steel and die-cast aluminium body  
Color : White, Black, Metallic Grey  
With electronic or conventional ballast kit

107102



IP 20



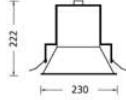


Malzeme : DKP sac ve alüminyum enjeksiyon gövde, alüminyum reflektör  
ve ısıya dayanıklı cam  
Renk : Beyaz, Siyah, Metalik Gri  
Elektronik veya mekanik balast kiti dahil  
Material : Pressed steel and die-cast aluminium body, aluminium reflector  
and tempered glass  
Color : White, Black, Metallic Grey  
With electronic or conventional ballast kit

107103



MAX.35-70W. HIT-CE G12



IP 20

REFLEKTÖR TIPI  
REFLECTOR TYPE

Dar / Narrow 10°  
Orta / Middle 24°  
Geniş / Wide 45°

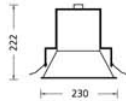


Malzeme : DKP sac ve alüminyum enjeksiyon gövde  
Renk : Beyaz, Siyah, Metalik Gri  
Elektronik veya mekanik balast kiti dahil  
Material : Pressed steel and die-cast aluminium body  
Color : White, Black, Metallic Grey  
With electronic or conventional ballast kit

107104



MAX.35-70W. HIR-CE 111 GX8.5



IP 20



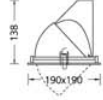


Malzeme : Alüminyum enjeksiyon ve DKP sac gövde, alüminyum reflektör  
ve ısıya dayanıklı cam  
Renk : Metalik Gri, Beyaz, Siyah  
Elektronik veya mekanik balast kiti dahil  
Material : Die-cast aluminium and pressed steel body, aluminium reflector  
and tempered glass  
Color : Metallic Grey, White, Black  
With electronic or conventional ballast kit

107108



MAX.35-70W. HIT-CE G12



IP 20



175x175

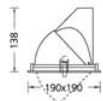


Malzeme : Alüminyum enjeksiyon ve DKP sac gövde, alüminyum reflektör  
ve ısıya dayanıklı cam  
Renk : Metalik Gri, Beyaz, Siyah  
Material : Die-cast aluminium and pressed steel body, aluminium reflector  
and tempered glass  
Color : Metallic Grey, White, Black

100107



MAX.80W. QT-DE12 R7s 75 mm.



IP 20



175x175





Malzeme : Alüminyum enjeksiyon gövde, alüminyum reflektör ve ısıya dayanıklı cam  
Renk : Metalik Gri, Beyaz, Siyah  
Elektronik veya mekanik balast kiti dahil

Material : Die-cast aluminium body, aluminium reflector and tempered glass  
Color : Metallic Grey, White, Black  
With electronic or conventional ballast kit

107107



MAX.35-70W. HIT-CE G12



IP 20



Malzeme : Alüminyum enjeksiyon gövde, alüminyum reflektör ve ısıya dayanıklı cam  
Renk : Metalik Gri, Beyaz, Siyah

Material : Die-cast aluminium body, aluminium reflector and tempered glass  
Color : Metallic Grey, White, Black

100106



MAX.80W. QT-DE12 R7s 75 mm.



IP 20



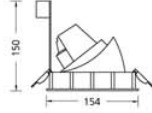




Malzeme : Alüminyum enjeksiyon gövde, alüminyum reflektör ve ısıya dayanıklı cam  
 Renk : Metalik Gri, Beyaz, Siyah  
 Elektronik veya mekanik balast kiti dahil

Material : Die-cast aluminium body, aluminium reflector and tempered glass  
 Color : Metallic Grey, White, Black  
 With electronic or conventional ballast kit

107116



IP 20

REFLEKTÖR TIPI  
 REFLECTOR TYPE  
 Dar / Narrow 10°  
 Orta / Middle 24°  
 Geniş / Wide 45°



Malzeme : Alüminyum enjeksiyon gövde, alüminyum reflektör ve ısıya dayanıklı cam  
 Renk : Metalik Gri, Beyaz, Siyah  
 Elektronik veya mekanik balast kiti dahil

Material : Die-cast aluminium body, aluminium reflector and tempered glass  
 Color : Metallic Grey, White, Black  
 With electronic or conventional ballast kit

107115



IP 20

REFLEKTÖR TIPI  
 REFLECTOR TYPE  
 Dar / Narrow 10°  
 Orta / Middle 24°  
 Geniş / Wide 45°





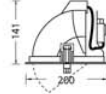
Malzeme : Alüminyum enjeksiyon gövde, alüminyum reflektör ve ısıya dayanıklı cam  
Renk : Metalik Gri, Beyaz, Siyah  
Elektronik veya mekanik balast kiti dahil

Material : Die-cast aluminium body, aluminium reflector and tempered glass  
Color : Metallic Grey, White, Black  
With electronic or conventional ballast kit

107110



MAX.70-150W. HIT-CE G12



IP 20



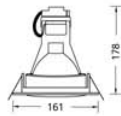
Malzeme : Alüminyum enjeksiyon gövde, alüminyum reflektör ve ısıya dayanıklı cam  
Renk : Metalik Gri, Beyaz, Siyah  
Elektronik veya mekanik balast kiti dahil

Material : Die-cast aluminium body, aluminium reflector and tempered glass  
Color : Metallic Grey, White, Black  
With electronic or conventional ballast kit

107109



MAX.35-70W. HIT-CE G12



IP 20





Malzeme : Alüminyum enjeksiyon gövde, alüminyum reflektör ve ısıya dayanıklı cam  
 Renk : Beyaz, Metalik Gri, Siyah  
 Elektronik veya mekanik balast kiti dahil

Material : Die-cast aluminium body, aluminium reflector and tempered glass  
 Color : White, Metallic Grey, Black  
 With electronic or conventional ballast kit

107106



IP 20



Malzeme : Alüminyum enjeksiyon gövde, alüminyum reflektör ve ısıya dayanıklı cam  
 Renk : Beyaz, Metalik Gri, Siyah  
 Elektronik veya mekanik balast kiti dahil

Material : Die-cast aluminium body, aluminium reflector and tempered glass  
 Color : White, Metallic Grey, Black  
 With electronic or conventional ballast kit

107105



IP 20





Arakawa Sportline | Recreational Sportlights



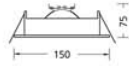




Malzeme : Alüminyum enjeksiyon gövde  
Renk : Metalik Gri, Beyaz, Siyah  
Trafo ile kullanılmalı

Material : Die-cast aluminium body  
Color : Metallic Grey, White, Black  
Transformer required

102134



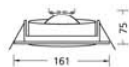
IP 20



Malzeme : Alüminyum enjeksiyon gövde  
Renk : Metalik Gri, Beyaz, Siyah  
Trafo ile kullanılmalı

Material : Die-cast aluminium body  
Color : Metallic Grey, White, Black  
Transformer required

102135



IP 20





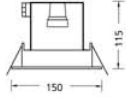
Malzeme : Alüminyum enjeksiyon gövde  
Renk : Metalik Gri, Beyaz, Siyah

Material : Die-cast aluminium body  
Color : Metallic Grey, White, Black

100104



MAX.75W. QPAR30 E27



IP 20



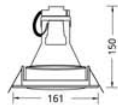
Malzeme : Alüminyum enjeksiyon gövde  
Renk : Metalik Gri, Beyaz, Siyah

Material : Die-cast aluminium body  
Color : Metallic Grey, White, Black

100103



MAX.75W. QPAR30 E27



IP 20







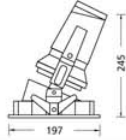
Malzeme : Alüminyum enjeksiyon gövde ve asimetric alüminyum reflektör  
Renk : Beyaz, Metalik Gri, Siyah

Material : Die-cast aluminium body and asymmetric aluminium reflector  
Color : White, Metallic Grey, Black

100110



MAX.100W. QPAR30 E27



IP 20



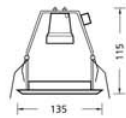
Malzeme : DKP sac gövde  
Renk : Beyaz, Metalik Gri, Siyah

Material : Pressed steel body  
Color : White, Metallic Grey, Black

100102



MAX.75W. QPAR30 E27



IP 20





Malzeme : Alüminyum enjeksiyon gövde  
Renk : Metalik Gri, Beyaz, Siyah

Material : Die-cast aluminium body  
Color : Metallic Grey, White, Black

100101

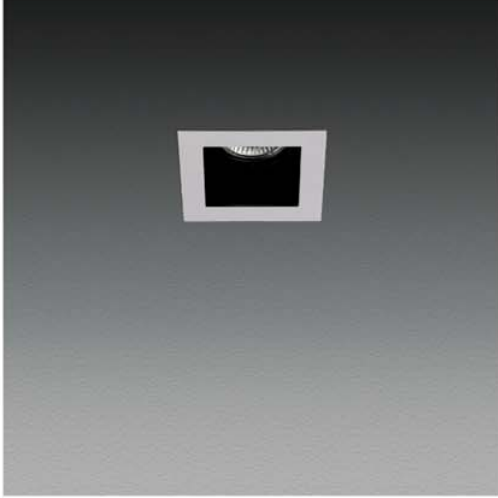


MAX.50W. QPAR20 E27



IP 20

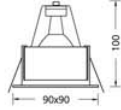




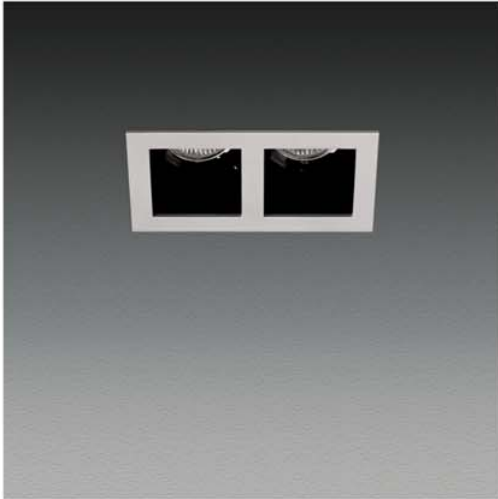
Malzeme : DKP sac gövde  
 Renk : Metalik Gri, Beyaz, Siyah  
 Trafo ile kullanılmalı

Material : Pressed steel body  
 Color : Metallic Grey, White, Black  
 Transformer required

102129



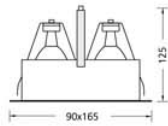
IP 20



Malzeme : DKP sac gövde  
 Renk : Metalik Gri, Beyaz, Siyah  
 Trafo ile kullanılmalı

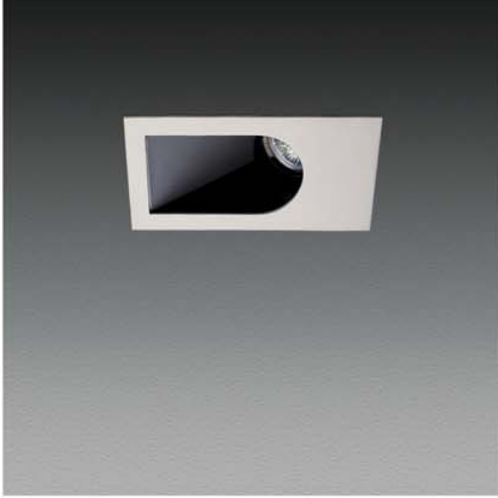
Material : Pressed steel body  
 Color : Metallic Grey, White, Black  
 Transformer required

102202



IP 20





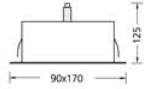
Malzeme : DKP sac gövde  
Renk : Metalik Gri, Beyaz, Siyah  
Trafo ile kullanılmalı

Material : Pressed steel body  
Color : Metallic Grey, White, Black  
Transformer required

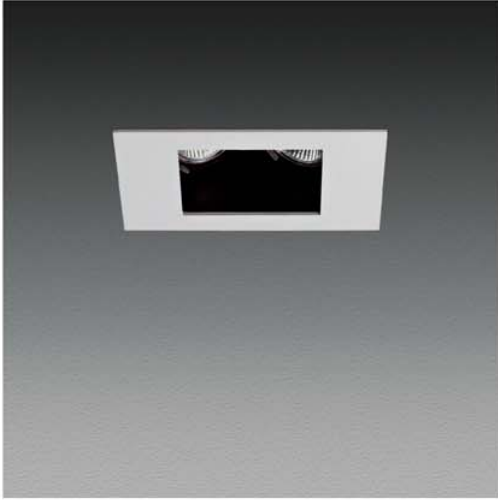
102128



MAX.1x12V, 50W, QR-CBCS1 GU5.3



IP 20



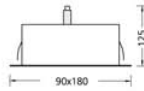
Malzeme : DKP sac gövde  
Renk : Metalik Gri, Beyaz, Siyah  
Trafo ile kullanılmalı

Material : Pressed steel body  
Color : Metallic Grey, White, Black  
Transformer required

102201



MAX.2x12V, 50W, QR-CBCS1 GU5.3



IP 20







Associação Espiritual | Profissional Espiritualista

## Ankastre Spotlar | Recessed Spotlights



Malzeme : DKP sac gövde  
Renk : Beyaz, Siyah, Metalik Gri  
Trafo ile kullanılmalı

Material : Pressed steel body  
Color : White, Black, Metallic Grey  
Transformer required

102109



MAX.12V. 50W. QR-CBCS1 GU5.3



IP 20



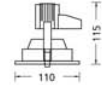
Malzeme : Alüminyum enjeksiyon gövde  
Renk : Beyaz, Metalik Gri, Siyah  
Trafo ile kullanılmalı

Material : Die-cast aluminium body  
Color : White, Metallic Grey, Black  
Transformer required

102127



MAX.12V. 50W. QR-CBCS1 GU5.3



IP 20



Malzeme : Alüminyum enjeksiyon gövde  
Renk : Beyaz, Metalik Gri, Siyah  
Trafo ile kullanılmalı

Material : Die-cast aluminium body  
Color : White, Metallic Grey, Black  
Transformer required

102106



MAX.12V. 50W. QR-CBCS1 GU5.3



IP 20





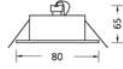
Malzeme : Alüminyum gövde  
Renk : Satin Alüminyum  
Trafo ile kullanılmalı

Material : Aluminium body  
Color : Satine Aluminium  
Transformer required

102122



MAX.12V. 50W. QR-CBCS1 GU5.3



IP 20



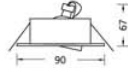
Malzeme : Alüminyum gövde  
Renk : Satin Alüminyum  
Trafo ile kullanılmalı

Material : Aluminium body  
Color : Satine Aluminium  
Transformer required

102123



MAX.12V. 50W. QR-CBCS1 GU5.3



IP 20



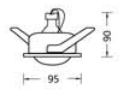
Malzeme : Zamak gövde ve pres cam  
Renk : Beyaz, Metalik Gri, Siyah  
Trafo ile kullanılmalı

Material : Zinc-alloy body and pressed glass  
Color : White, Metallic Grey, Black  
Transformer required

102124



MAX.12V. 50W. QR-CBCS1 GU5.3



IP 65





## Ankastre Spotlar | Recessed Spotlights –



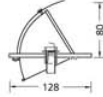
Malzeme : Alüminyum enjeksiyon gövde  
Renk : Beyaz, Metalik Gri, Siyah  
Trafo ile kullanılmalı

Material : Die-cast aluminium body  
Color : White, Metallic Grey, Black  
Transformer required

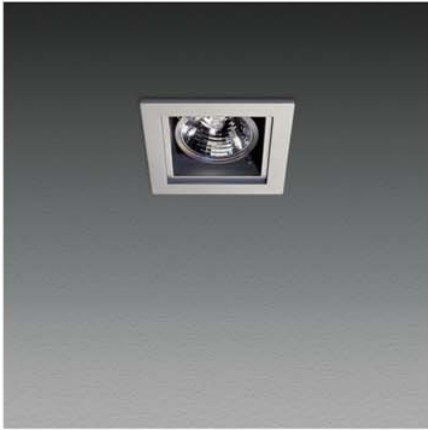
102112



MAX.12V. 50W. QR-CBCS1 GUS.3



IP 20



Malzeme : Alüminyum enjeksiyon gövde  
Renk : Beyaz, Metalik Gri, Siyah  
Trafo ile kullanılmalı

Material : Die-cast aluminium body  
Color : White, Metallic Grey, Black  
Transformer required

102113



MAX.12V. 50W. QR-CBCS1 GUS.3



IP 20



Malzeme : Alüminyum enjeksiyon gövde ve ısıya dayanıklı cam  
Renk : Beyaz, Metalik Gri, Siyah  
Trafo ile kullanılmalı

Material : Die-cast aluminium body and tempered glass  
Color : White, Metallic Grey, Black  
Transformer required

102114



MAX.12V. 50W. QR-CBCS1 GUS.3



IP 20





Malzeme : Alüminyum enjeksiyon gövde  
Renk : Beyaz, Metalik Gri, Siyah  
Trafo ile kullanılmalı

Material : Die-cast aluminium body  
Color : White, Metallic Grey, Black  
Transformer required

102115



MAX.12V. 35W. QR.CBC35 GU4



IP 20



Malzeme : Alüminyum enjeksiyon gövde ve ısıya dayanıklı cam  
Renk : Beyaz, Metalik Gri, Siyah  
Trafo ile kullanılmalı

Material : Die-cast aluminium body and tempered glass  
Color : White, Metallic Grey, Black  
Transformer required

102116



MAX.12V. 35W. QR.CBC35 GU4



IP 20



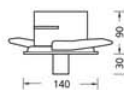
Malzeme : Alüminyum gövde ve dekoratif cam  
Renk : Krom  
Trafo ile kullanılmalı

Material : Aluminium body and decorative glass  
Color : Chrome  
Transformer required

102108



MAX.12V. 50W. QR.CBC51 GU5.3



IP 20



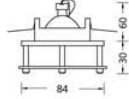
# Ankastre Spotlar | Recessed Spotlights



Malzeme : Zamak gövde ve dekoratif cam  
 Renk : Krom  
 Trafo ile kullanılmalı

Material : Zinc-alloy body and decorative glass  
 Color : Chrome  
 Transformer required

102125



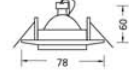
IP 20



Malzeme : Zamak gövde ve dekoratif cam  
 Renk : Beyaz, Metalik Gri, Siyah  
 Trafo ile kullanılmalı

Material : Zinc-alloy body and decorative glass  
 Color : White, Metallic Grey, Black  
 Transformer required

102126



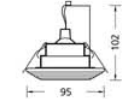
IP 20



Malzeme : Pres cam gövde  
 Renk : Asit Mat  
 Trafo ile kullanılmalı

Material : Pressed glass body  
 Color : Acid Matt  
 Transformer required

102111



IP 20





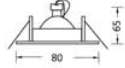
Malzeme : Alüminyum enjeksiyon gövde  
Renk : Beyaz, Metalik Gri, Siyah  
Trafo ile kullanılmalı

Material : Die-cast aluminium body  
Color : White, Metallic Grey, Black  
Transformer required

102118



MAX.12V. 50W. QR-CBCS1 GUS.3



IP 20



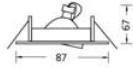
Malzeme : Alüminyum enjeksiyon gövde  
Renk : Beyaz, Metalik Gri  
Trafo ile kullanılmalı

Material : Die-cast aluminium body  
Color : White, Metallic Grey  
Transformer required

102119



MAX.12V. 50W. QR-CBCS1 GUS.3



IP 20



Malzeme : Alüminyum enjeksiyon gövde  
Renk : Beyaz, Metalik Gri, Siyah  
Trafo ile kullanılmalı

Material : Die-cast aluminium body  
Color : White, Metallic Grey, Black  
Transformer required

102107



MAX.12V. 50W. QR-CBCS1 GUS.3



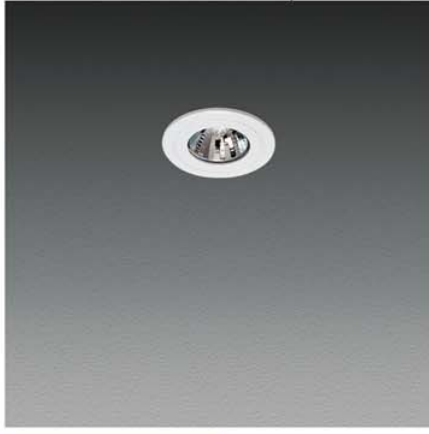
IP 20







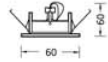
# Ankastre Spotlar | Recessed Spotlights –



Malzeme : Alüminyum enjeksiyon gövde  
Renk : Beyaz, Metalik Gri, Siyah  
Trafo ile kullanılmalı

Material : Die-cast aluminium body  
Color : White, Metallic Grey, Black  
Transformer required

102105



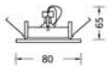
IP 20



Malzeme : Alüminyum enjeksiyon gövde  
Renk : Beyaz, Metalik Gri, Siyah  
Trafo ile kullanılmalı

Material : Die-cast aluminium body  
Color : White, Metallic Grey, Black  
Transformer required

102104



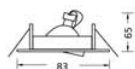
IP 20



Malzeme : Alüminyum enjeksiyon gövde  
Renk : Beyaz, Siyah, Metalik Gri, Krom, Altın Sarı, Satin Nikel  
Trafo ile kullanılmalı

Material : Die-cast aluminium body  
Color : White, Black, Metallic Grey, Chrome, Gold Plated, Satine Nickel  
Transformer required

102102



IP 20

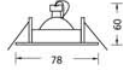




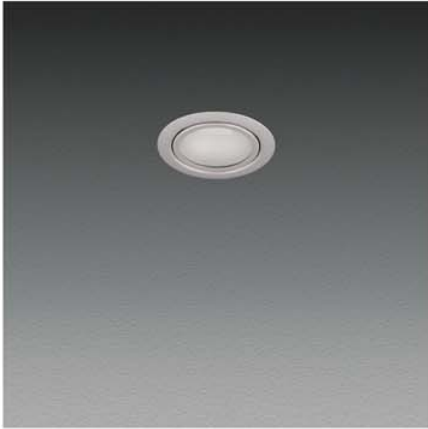
Malzeme : Alüminyum enjeksiyon gövde  
Renk : Beyaz, Siyah, Metalik Gri, Krom, Altın Sarı, Satin Nikel  
Trafo ile kullanılmalı

Material : Die-cast aluminium body  
Color : White, Black, Metallic Grey, Chrome, Gold Plated, Satine Nickel  
Transformer required

102101



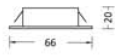
IP 20



Malzeme : DKP sac gövde  
Renk : Beyaz, Metalik Gri, Krom  
Trafo ile kullanılmalı

Material : Pressed steel body  
Color : White, Metallic Grey, Chrome  
Transformer required

102103



IP 20







Malzeme : Alüminyum enjeksiyon gövde ve alüminyum reflektör  
 Renk : Beyaz, Metalik Gri  
 Elektronik veya mekanik balast kiti dahil

Material : Die-cast aluminium body and aluminium reflector  
 Color : White, Metallic Grey  
 With electronic or conventional ballast kit

106104

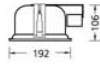
106201



MAX.1x18W TC-D G24q2  
 MAX.1x18W TC-DEL G24q2



MAX.2x18W TC-D G24q2  
 MAX.2x18W TC-DEL G24q2



IP 20



Malzeme : Alüminyum enjeksiyon gövde ve alüminyum reflektör  
 Renk : Beyaz, Metalik Gri  
 Elektronik veya mekanik balast kiti dahil

Material : Die-cast aluminium body and aluminium reflector  
 Color : White, Metallic Grey  
 With electronic or conventional ballast kit

106105

106202



MAX.1x28W TC-D G24q3  
 MAX.1x28W TC-DEL G24q3



MAX.1x42W TC-TEL GX24q4



MAX.2x28W TC-D G24q3  
 MAX.2x28W TC-DEL G24q3



MAX.2x42W TC-TEL GX24q4



IP 20





Malzeme : Alüminyum enjeksiyon gövde ve alüminyum artı reflektör  
 Renk : Beyaz, Metalik Gri  
 Elektronik veya mekanik balast kiti dahil

Material : Die-cast aluminium body and aluminium cross reflector  
 Color : White, Metallic Grey  
 With electronic or conventional ballast kit

106106

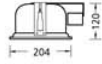
106203



MAX.1x18W TC-D G24q2  
 MAX.1x18W TC-DEL G24q2



MAX.2x18W TC-D G24q2  
 MAX.2x18W TC-DEL G24q2



IP 20



Malzeme : Alüminyum enjeksiyon gövde ve alüminyum artı reflektör  
 Renk : Beyaz, Metalik Gri  
 Elektronik veya mekanik balast kiti dahil

Material : Die-cast aluminium body and aluminium cross reflector  
 Color : White, Metallic Grey  
 With electronic or conventional ballast kit

106107

106204



MAX.1x20W TC-D G24q3  
 MAX.1x20W TC-DEL G24q3



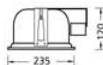
MAX.1x20W TC-TEL G24q3



MAX.2x20W TC-D G24q3  
 MAX.2x20W TC-DEL G24q3



MAX.2x20W TC-TEL G24q3



IP 20





Malzeme : Alüminyum enjeksiyon gövde, alüminyum reflektör ve ısıya dayanıklı cam

Renk : Beyaz, Metalik Gri  
Elektronik veya mekanik balast kiti dahil

Material : Die-cast aluminium body, aluminium reflector and tempered glass

Color : White, Metallic Grey  
With electronic or conventional ballast kit

106108

106205



MAX.1x18W. TC-D G24q2  
MAX.1x18W. TC-DEL G24q2



MAX.2x18W. TC-D G24q2  
MAX.2x18W. TC-DEL G24q2



IP 30



Malzeme : Alüminyum enjeksiyon gövde, alüminyum reflektör ve ısıya dayanıklı cam

Renk : Beyaz, Metalik Gri  
Elektronik veya mekanik balast kiti dahil

Material : Die-cast aluminium body, aluminium reflector and tempered glass

Color : White, Metallic Grey  
With electronic or conventional ballast kit

106109

106206



MAX.1x26W. TC-D G24q3  
MAX.1x26W. TC-DEL G24q3



MAX.2x26W. TC-D G24q3  
MAX.2x26W. TC-DEL G24q3



IP 30











Malzeme : Alüminyum enjeksiyon gövde, alüminyum reflektör ve ısıya dayanıklı cam  
 Renk : Beyaz, Metalik Gri  
 Elektronik veya mekanik balast kiti dahil

Material : Die-cast aluminium body, aluminium reflector and tempered glass  
 Color : White, Metallic Grey  
 With electronic or conventional ballast kit

106110

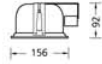
106207



MAX.1x13W. TC D G24d1  
 MAX.1x13W. TC DEL G24q1



MAX.2x13W. TC D G24d1  
 MAX.2x13W. TC DEL G24q1



IP 30



Malzeme : Alüminyum enjeksiyon gövde, alüminyum reflektör ve ısıya dayanıklı cam  
 Renk : Beyaz, Metalik Gri  
 Elektronik veya mekanik balast kiti dahil

Material : Die-cast aluminium body, aluminium reflector and tempered glass  
 Color : White, Metallic Grey  
 With electronic or conventional ballast kit

106111

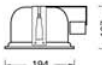
106208



MAX.1x18W. TC D G24d2  
 MAX.1x18W. TC DEL G24q2



MAX.2x18W. TC D G24d2  
 MAX.2x18W. TC DEL G24q2



IP 30





Malzeme : Alüminyum enjeksiyon gövde, alüminyum reflektör ve ısıya dayanıklı cam  
Renk : Beyaz, Metalik Gri  
Elektronik veya mekanik balast kiti dahil

Material : Die-cast aluminium body, aluminium reflector and tempered glass  
Color : White, Metallic Grey  
With electronic or conventional ballast kit

106112

106209



MAX.1x28W TC-D G24e3  
MAX.1x28W TC-DEI G24e3



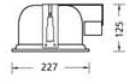
MAX.1x42W TC-TEL GX24e4



MAX.2x28W TC-D G24e3  
MAX.2x28W TC-DEI G24e3



MAX.2x42W TC-TEL GX24e4



IP 30





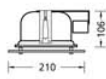


Malzeme : Alüminyum enjeksiyon gövde, alüminyum reflektör ve dekoratif cam  
 Renk : Beyaz, Metalik Gri  
 Elektronik veya mekanik balast kiti dahil

Material : Die-cast aluminium body, aluminium reflector and decorative glass  
 Color : White, Metallic Grey  
 With electronic or conventional ballast kit

106113

106210



IP 20

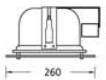
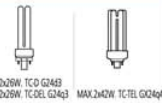
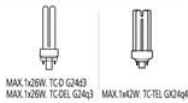


Malzeme : Alüminyum enjeksiyon gövde, alüminyum reflektör ve dekoratif cam  
 Renk : Beyaz, Metalik Gri  
 Elektronik veya mekanik balast kiti dahil

Material : Die-cast aluminium body, aluminium reflector and decorative glass  
 Color : White, Metallic Grey  
 With electronic or conventional ballast kit

106114

106211



IP 20





Malzeme : Alüminyum enjeksiyon gövde, kamaşma önleyici reflektör ve ısıya dayanıklı cam  
Renk : Beyaz, Metalik Gri  
Elektronik veya mekanik balast kiti dahil

Material : Die-cast aluminium body, darklight reflector and tempered glass  
Color : White, Metallic Grey  
With electronic or conventional ballast kit

106115

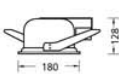
106212



MAX.1x18W TC-D G24q2  
MAX.1x18W TC-DEL G24q2



MAX.2x18W TC-D G24q2  
MAX.2x18W TC-DEL G24q2



IP 30



Malzeme : Alüminyum enjeksiyon gövde, kamaşma önleyici reflektör ve ısıya dayanıklı cam  
Renk : Beyaz, Metalik Gri  
Elektronik veya mekanik balast kiti dahil

Material : Die-cast aluminium body, darklight reflector and tempered glass  
Color : White, Metallic Grey  
With electronic or conventional ballast kit

106116

106213



MAX.1x20W TC-D G24q3  
MAX.1x20W TC-DEL G24q3



MAX.1x42W TC-TEL G24q4



MAX.2x20W TC-D G24q3  
MAX.2x20W TC-DEL G24q3



MAX.2x42W TC-TEL G24q4



IP 30

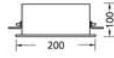




Malzeme : Alüminyum enjeksiyon ve DKP sac gövde, opal akrilik ön kapak ve alüminyum reflektör  
 Renk : Beyaz, Metalik Gri  
 Elektronik veya mekanik balast kiti dahil

Material : Die-cast aluminium and pressed steel body, opaline acrylic diffuser and aluminium reflector  
 Color : White, Metallic Grey  
 With electronic or conventional ballast kit

106214



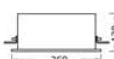
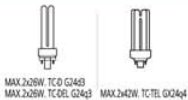
IP 20



Malzeme : Alüminyum enjeksiyon ve DKP sac gövde, opal akrilik ön kapak ve alüminyum reflektör  
 Renk : Beyaz, Metalik Gri  
 Elektronik veya mekanik balast kiti dahil

Material : Die-cast aluminium and pressed steel body, opaline acrylic diffuser and aluminium reflector  
 Color : White, Metallic Grey  
 With electronic or conventional ballast kit

106215



IP 20





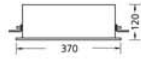
Malzeme : DKP sac gövde ve opal akrilik ön kapak  
Renk : Beyaz, Metalik Gri  
Elektronik balast gövdeye montajlıdır

Material : Pressed steel body and opaline acrylic diffuser  
Color : White, Metallic Grey  
Built-in electronic ballast

108103



MAX.55W. FC 2GX13



IP 20



Malzeme : DKP sac gövde ve opal akrilik ön kapak  
Renk : Beyaz, Metalik Gri  
Elektronik balast gövdeye montajlıdır

Material : Pressed steel body and opaline acrylic diffuser  
Color : White, Metallic Grey  
Built-in electronic ballast

108104

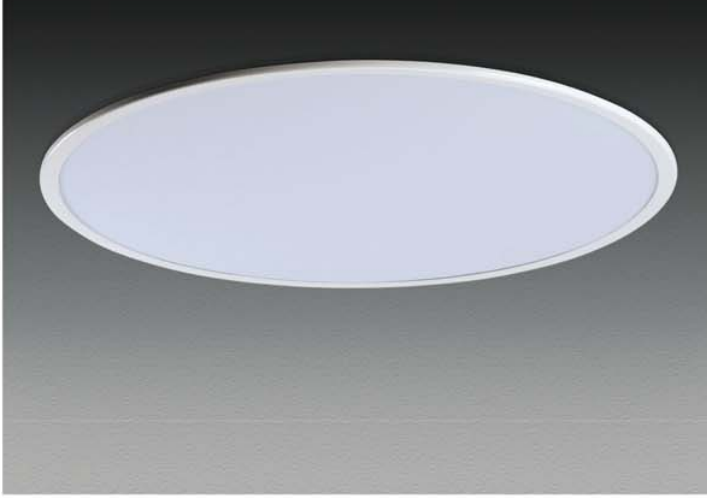


MAX.55W. FC 2GX13



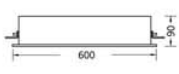
IP 20





Malzeme : DKP sac gövde ve opal akrilik ön kapak  
Renk : Beyaz, Metalik Gri  
Elektronik balast gövdeye montajlıdır  
Material : Pressed steel body and opaline acrylic diffuser  
Color : White, Metallic Grey  
Built-in electronic ballast

108601



IP 20







Malzeme : Alüminyum enjeksiyon gövde, alüminyum reflektör ve ısıya dayanıklı cam  
 Renk : Beyaz, Metalik Gri  
 Elektronik veya mekanik balast kiti dahil

Material : Aluminium die-cast body, aluminium reflector and tempered glass  
 Color : White, Metallic Grey  
 With electronic or conventional ballast kit

106103

100105



MAX.13W, TC-D G24d1  
 MAX.13W, TC-DEL G24q1



MAX.70W, QT32 E27



IP 30



Malzeme : Alüminyum enjeksiyon gövde ve alüminyum reflektör  
 Renk : Beyaz, Metalik Gri  
 Elektronik veya mekanik balast kiti dahil

Material : Die-cast aluminium body and aluminium reflector  
 Color : White, Metallic Grey  
 With electronic or conventional ballast kit

106102

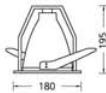
100114



MAX.18W, TC-D G24d2  
 MAX.18W, TC-DEL G24q2



MAX.20W, TC-TSE E27



IP 20





Malzeme : Alüminyum enjeksiyon gövde ve alüminyum reflektör  
Renk : Beyaz, Metalik Gri  
Elektronik veya mekanik balast kiti dahil

Material : Die-cast aluminium body and aluminium reflector  
Color : White, Metallic Grey  
With electronic or conventional ballast kit

106101

100115



MAX.13W. TCD G24q1  
MAX.13W. TC OEL G24q1



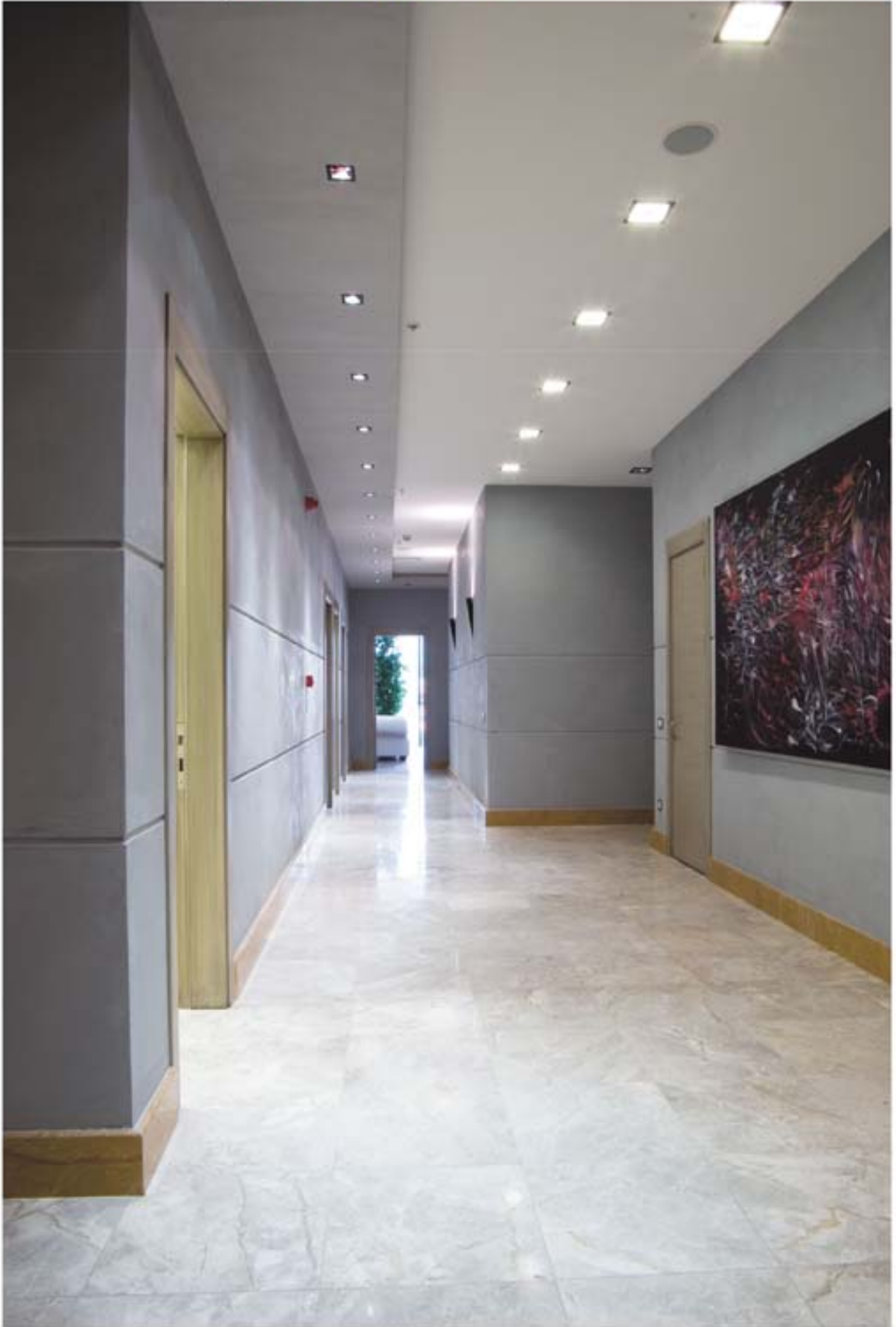
MAX.16W. TC-TSE E27



IP 20









Apresento Sportivo | Business | Científico



106221



MAX.2x13W TC-0 G24d1  
MAX.2x13W TC-DEL G24q1



IP 20



Malzeme : Alüminyum enjeksiyon ve DKP sac gövde, opal akrilik ön kapak ve alüminyum reflektör  
Renk : Beyaz, Metalik Gri  
Elektronik veya mekanik balast kiti dahil

Material : Die-cast aluminium and pressed steel body, opaline acrylic diffuser and aluminium reflector  
Color : White, Metallic Grey  
With electronic or conventional ballast kit



106222



MAX.2x25W TC-0 G143  
MAX.2x25W TC-DEL G243



MAX.2x25W TC-TL G243



IP 20



Malzeme : Alüminyum enjeksiyon ve DKP sac gövde, opal akrilik ön kapak ve alüminyum reflektör  
Renk : Beyaz, Metalik Gri  
Elektronik veya mekanik balast kiti dahil

Material : Die-cast aluminium and pressed steel body, opaline acrylic diffuser and aluminium reflector  
Color : White, Metallic Grey  
With electronic or conventional ballast kit



106301



MAX.3x25W TC-0 G243  
MAX.3x25W TC-DEL G243



MAX.3x25W TC-TL G243



IP 20



Malzeme : Alüminyum enjeksiyon ve DKP sac gövde, opal akrilik ön kapak ve alüminyum reflektör  
Renk : Beyaz, Metalik Gri  
Elektronik veya mekanik balast kiti dahil

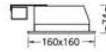
Material : Die-cast aluminium and pressed steel body, opaline acrylic diffuser and aluminium reflector  
Color : White, Metallic Grey  
With electronic or conventional ballast kit



Malzeme : Alüminyum enjeksiyon ve DKP sac gövde, opal akrilik ön kapak  
Renk : Beyaz, Metalik Gri  
Elektronik veya mekanik balast kiti dahil

Material : Die-cast aluminium and pressed steel body, opaline acrylic diffuser  
Color : White, Metallic Grey  
With electronic or conventional ballast kit

106223



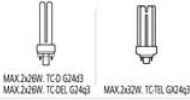
IP 20



Malzeme : Alüminyum enjeksiyon ve DKP sac gövde, opal akrilik ön kapak  
Renk : Beyaz, Metalik Gri  
Elektronik veya mekanik balast kiti dahil

Material : Die-cast aluminium and pressed steel body, opaline acrylic diffuser  
Color : White, Metallic Grey  
With electronic or conventional ballast kit

106224



IP 20



Malzeme : Alüminyum enjeksiyon ve DKP sac gövde, opal akrilik ön kapak  
Renk : Beyaz, Metalik Gri  
Elektronik veya mekanik balast kiti dahil

Material : Die-cast aluminium and pressed steel body, opaline acrylic diffuser  
Color : White, Metallic Grey  
With electronic or conventional ballast kit

106302



IP 20





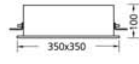
Malzeme : DKP sac gövde ve opal akrilik ön kapak  
 Renk : Beyaz, Metalik Gri  
 Elektronik balast gövdeye montajlıdır

Material : Pressed steel body and opaline acrylic diffuser  
 Color : White, Metallic Grey  
 Built-in electronic ballast

108105



MAX.55W. FC 2GX13



IP 20



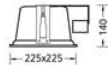
Malzeme : Alüminyum enjeksiyon gövde ve alüminyum artı reflektör  
 Renk : Beyaz, Metalik Gri  
 Elektronik veya mekanik balast kiti dahil

Material : Die-cast aluminium body and aluminium cross reflector  
 Color : White, Metallic Grey  
 With electronic or conventional ballast kit

106216



MAX.2x35W. TC O G24e3  
 MAX.2x25W. TC DEL G24e3  
 MAX.2x40W. TC TEL GX24e4



IP 20













Malzeme : DKP sac gövde, alüminyum reflektör ve ısıya dayanıklı cam  
 Renk : Beyaz, Metalik Gri  
 Elektronik veya mekanik balast kiti dahil

Material : Pressed steel body, aluminium reflector and tempered glass  
 Color : White, Metallic Grey  
 With electronic or conventional ballast kit

106117

106217



MAX.1x10W. TC-D G24d1  
 MAX.1x10W. TC-DEL G24q1



MAX.2x10W. TC-D G24d1  
 MAX.2x10W. TC-DEL G24q1



IP 30



Malzeme : DKP sac gövde, alüminyum reflektör ve ısıya dayanıklı cam  
 Renk : Beyaz, Metalik Gri  
 Elektronik veya mekanik balast kiti dahil

Material : Pressed steel body, aluminium reflector and tempered glass  
 Color : White, Metallic Grey  
 With electronic or conventional ballast kit

106118

106218



MAX.1x18W. TC-D G24d2  
 MAX.1x18W. TC-DEL G24q2



MAX.2x18W. TC-D G24d2  
 MAX.2x18W. TC-DEL G24q2



IP 30





Malzeme : DKP sac gövde, alüminyum reflektör ve ısıya dayanıklı cam  
Renk : Beyaz, Metalik Gri  
Elektronik veya mekanik balast kiti dahil

Material : Pressed steel body, aluminium reflector and tempered glass  
Color : White, Metallic Grey  
With electronic or conventional ballast kit

106219



MAX.2x26W. T.C.D. G24d3  
MAX.2x26W. TC.DEL. G24q3



IP 30



Malzeme : DKP sac gövde, alüminyum reflektör ve ısıya dayanıklı cam  
Renk : Beyaz, Metalik Gri  
Elektronik veya mekanik balast kiti dahil

Material : Pressed steel body, aluminium reflector and tempered glass  
Color : White, Metallic Grey  
With electronic or conventional ballast kit

106220



MAX.2x26W. T.C.D. G24d3  
MAX.2x26W. TC.DEL. G24q3



IP 30





Malzeme : DKP sac gövde, alüminyum reflektör ve ısıya dayanıklı cam  
 Renk : Beyaz, Metalik Gri  
 Elektronik veya mekanik balast kiti dahil

Material : Pressed steel body, aluminium reflector and tempered glass  
 Color : White, Metallic Grey  
 With electronic or conventional ballast kit

106119

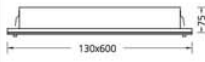
106226



MAX.1x40W. TCL 2G11



MAX.2x24W. T16 G5



IP 30



Malzeme : DKP sac gövde, alüminyum reflektör ve ısıya dayanıklı cam  
 Renk : Beyaz, Metalik Gri  
 Elektronik veya mekanik balast kiti dahil

Material : Pressed steel body, aluminium reflector and tempered glass  
 Color : White, Metallic Grey  
 With electronic or conventional ballast kit

108201

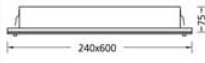
108303



MAX.2x40W. TCL 2G11



MAX.3x24W. T16 G5



IP 30





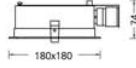
Malzeme : DKP sac gövde, alüminyum reflektör ve ısıya dayanıklı cam  
Renk : Beyaz, Metalik Gri  
Elektronik veya mekanik balast kiti dahil

Material : Pressed steel body, aluminium reflector and tempered glass  
Color : White, Metallic Grey  
With electronic or conventional ballast kit

106225



MAX.2x18W. TCD G24d2  
MAX.2x18W. TCDEL G24q2



IP 30



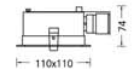
Malzeme : DKP sac gövde, alüminyum reflektör ve ısıya dayanıklı cam  
Renk : Beyaz, Metalik Gri  
Elektronik veya mekanik balast kiti dahil

Material : Pressed steel body, aluminium reflector and tempered glass  
Color : White, Metallic Grey  
With electronic or conventional ballast kit

106120



MAX.1x10W. TCD G24d1  
MAX.1x10W. TCDEL G24q1



IP 30





Malzeme : DKP sac gövde ve dekoratif asimetrik  
alüminyum reflektör  
Renk : Metalik Gri  
Elektronik veya mekanik balast kiti dahil

Material : Pressed steel body and decorative asymmetric  
aluminium reflector  
Color : Metallic Grey  
With electronic or conventional ballast kit

108101

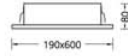


MAX.1x40W, TCL 2G11

108102



MAX.1x24W, T16 G5



IP 20





Arkansas Sportstar | Recessed Sportslights